

## Technical parameter

Items	T9Ex	T10Ex
Types	Uncooled focal plane (vanadium oxide)	
Resolution	384×288	640 x 512
Wave range	7~14um	7~14um
NETD	≤0.03°C	≤0.03°C
Frame rate	60Hz	60Hz
Focusing mode	Manual/Electric/Automatic	Manual/Electric/Automatic
FOV	28° x 21°/0.2m	28° x 21°/0.2m
Spatial resolution	1.3mrad	0.8mrad
Super pixel function	768×576	1280×1024
Monitor	4.0" TFT LCD, color, with capacitive touch screen	
Backlight	High brightness sunlight screen	
Color palette (mode)	11 kinds of color scale selectable	
Image adjustment	Auto/Manual	
Display method	Infrared, visible light, picture-in-picture, fusion	
Digital zoom	1~10x	
Visible light camera	500 megapixels	
Video output	HDMI	
Positioning point display	Laser positioning point on the image display	
Temperature range	-20°C ~ +650°C, expandable	
Temperature accuracy	±2°C or ±2% measurement value, take the larger absolute value	
Temperature mode	Real-time 10 movable points (the hottest and coldest points are independent), 8 movable areas (the highest temperature, the lowest temperature capture, average temperature measurement), line temperature measurement, isothermal analysis, temperature difference measurement, temperature alarm (sound, color)	
Battery	Rechargeable lithium battery, replaceable	
Battery operating time	6 hours	
Battery charge time	Fast charging function (external charger), random charging possible	
Power Management	Automatic hibernation, automatic shutdown	
Overall size	W116×D187×H278mm	
Overall weight	≤1000g	
Handrail	Yes, both sides can be installed	
Tripod	1/4"-20-UNC	
Memory Card Slot	TF card holder	
Data Interface	USB Type C, image/video transfer	
Video Interface	HDMI	
Power connector	USB Type C	
Laser	Laser Rangefinder	
Fill light	2 LED	
Microphone	Yes	
Buzzer	Yes	
WiFi	Yes	
Bluetooth module	Audio output/input (Bluetooth headphones)	
GPS	Yes	
Electronic compass	Yes	
Operating temperature	-20°C~+50°C	
Storage Temperature	-40°C~+70°C	
Humidity	≤95% non condensing	
Protection level	IP54	
Explosion-proof grade	Ex ib IIC T4 Gb	
Drop	2m, GB/T2423.8 (IEC60068-2-32)	

★ The above data and contents are for reference only, and the actual products shall prevail.



Zhejiang Dali Technology Co., Ltd. was formerly known as Zhejiang Institute of Testing Technology, which was established in 1984, was restructured in 2001, and listed on Shenzhen Stock Exchange in February 2008 (stock code 002214).

Dali Technology is a high-tech enterprise specializing in the development of uncooled infrared focal plane detectors, infrared thermal imaging systems, intelligent inspection robots, and inertial navigation optoelectronic products. It is one of the few professional manufacturers in China with independent technology control, complete intellectual property rights, and independent research and development, and has a complete industrial chain from the production of thermal imaging core devices, and movement components to the manufacture of complete systems. The company has undertaken a number of national scientific research projects such as "Nuclear High Foundation" and "Major Scientific Instruments". Our products are widely used in the fields of aerospace, electric power, petrochemical, civil consumption, etc. We have three technology R&D centers in Hangzhou, Shanghai, and Beijing, and are the only infrared company in China that has achieved mass production of uncooled focal plane infrared detectors with dual technology lines (amorphous silicon and vanadium oxide).

Based on the development vision of "striving to become a world-famous supplier of optoelectronic products", Dali Technology continues its mature R&D system, quality management system, and after-sales service system, with the core brand value of "technology reassures customers and service satisfies customers". To provide high-quality products and professional services for global customers. Combined with its own continuous exploration of optoelectronic application technology, to provide global customers with significant effective industry solutions.



## CONTACT US

Add:639 Binkang Road, Hangzhou, P.R.CHINA, 310053

Tel:+86-571-86695623

E-mail:sales@dali-tech.com

# IRTECH

## EXPLOSION-PROOF T9Ex/T10Ex HANDHELD THERMAL IMAGING CAMERA



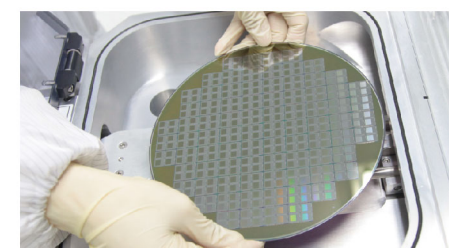
# EXPLOSION-PROOF T9Ex/T10Ex HANDHELD THERMAL IMAGING CAMERA



## Infrared temperature measurement Safe and reliable



Core self-research  
384×288/640×512  
Uncooled focal plane microthermal type (vox)



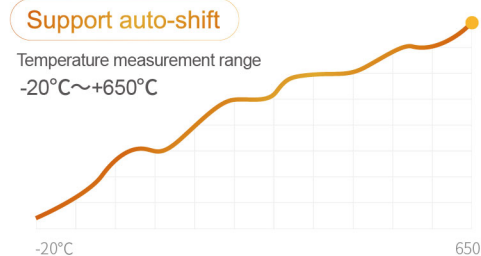
High frame rate/ High sensitivity  
60Hz frame rate/ Smooth picture without delay  
No lag in temperature measurement with more convenient operation



Full coverage of temperature measurement  
Chemical plants, natural gas wells, offshore oil platforms, LNG stations, etc.

Support auto-shift

Temperature measurement range  
-20°C~+650°C



New explosion-proof circuit  
Suitable for all kinds of scenes in such petrochemical category, more safe and more secure in use

Explosion-proof signs  
**Ex ib IIC T4 Gb**



### Image function

Infrared / visible light / picture-in-picture / fusion / thermal overlay / image enhancement mode  
A variety of modes can be switched to meet the needs of various scenes



### Rich temperature measurement functions

Multi-point temperature measurement,  
Multi-area temperature measurement,  
Line temperature measurement,  
Temperature alarm Partition emissivity setting,  
Multiple annotation methods

Multi-point  
Multi-area  
Line



### Professional report analysis software

Professional comprehensive analysis and post-processing of infrared thermal images to achieve unified management of information resources

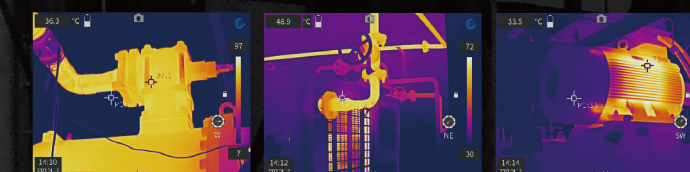


### Dual-core CPU+FPGA architecture

Low power image processor, fast response time, reserved for system expansion

## Application Areas

Chemical plants, natural gas well sites, offshore oil platforms, LNG stations, oil refineries, chemical refineries, gas stations, chemical processing plants, hazardous chemical parking lots, hazardous chemical storage areas, natural gas power plants, pesticide plants, coal chemical plants, and etc.



### Milliseconds focus touch screen button dual control

New focus algorithm, so that the focus is fast and clear.  
Color LCD touch screen



### Rich interface

WIFI, Bluetooth, Type-C, HDMI, GPS, electronic compass, range finding, LED Fill light